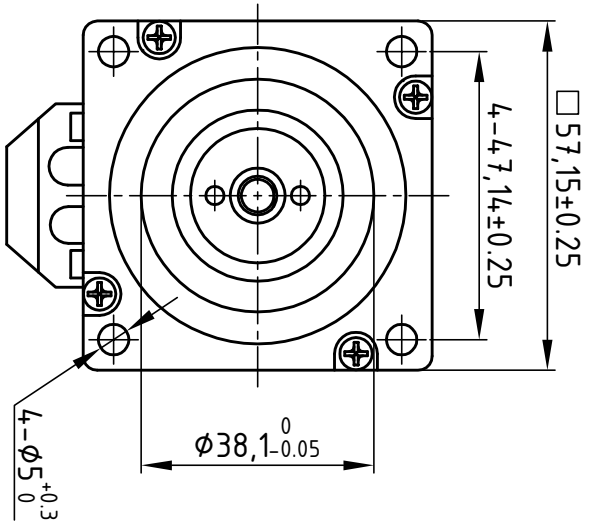


Dimension: (Unit: mm)



**Common Rating**

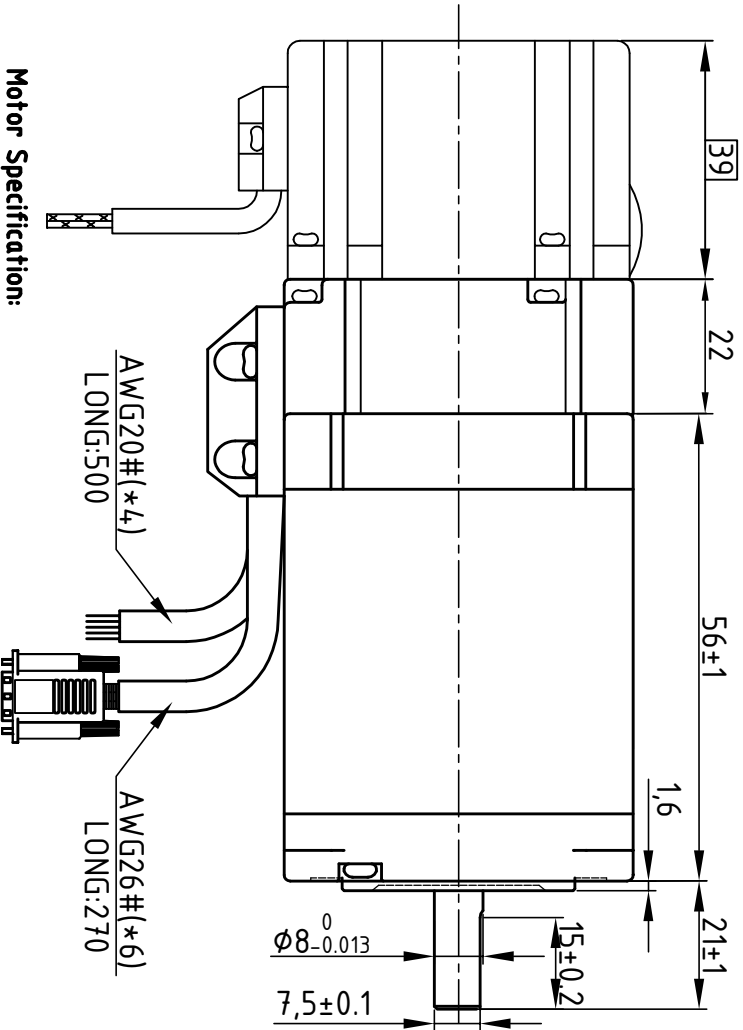
Step angle	1.8°
Position accuracy	1.8±0.09°
Dielectric strength	500VAC 1min
Insulation resistance	100MΩhm(500VDC)
Insulation class	B
Temp rise(Max)	80K
Radial play	Max: 0.02mm(load 4.50g)
Axial play	Max: 0.08mm(load 900g)

**Brake Specification:**

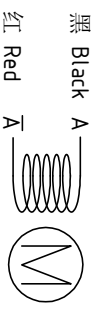
Voltage	24Vdc
Friction torque	2N·M

**Motor Specification:**

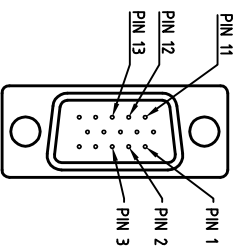
Current/phase	4 A
Voltage	24 V
DC Resistance/phase ±10%	0.45 Ω
Inductance/phase ±20%	1.4 mH
Holding torque	1.2 N·M
Inertia	0.28 kg·cm <sup>2</sup>
Weight	1.5 kg
Encoder Resolution	1000 cpr



**Motor Connections:**

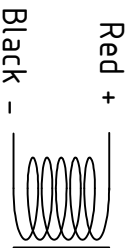


**Encoder Signals**



PIN	1	2	3	11	12	13
颜色	黑	红	白	黄	绿	蓝
定义	A+	VCC	GND	B+	B-	A-

**Brake Connections**



设计 Designed	王洪松	日期 Date	2018.11.27	材料 Material	
审核 Checked	黄捷建		2018.11.27	第一角画法 First angle projection	
批准 Approved	黄捷建		2018.11.27	重量 Weight	
				比例 Scale	
				阶段 Stage Mark	
图号 Part No.		共 1 套 1 套	Sheet 1 of 1	图号 DWG. NO.	LS-CME57-02-0111-08
深圳市雷赛智能控制股份有限公司 SHENZHEN LEADSHINE TECHNOLOGY CO., LTD.		57CME12X-BZ			
带抱闸混合伺服电机					

版本 Rev:	日期 Date	变更文件号 ECN NO.	变更内容 Revisions	设计 By
V1.0	18.10.19		李麒麟	王桂林