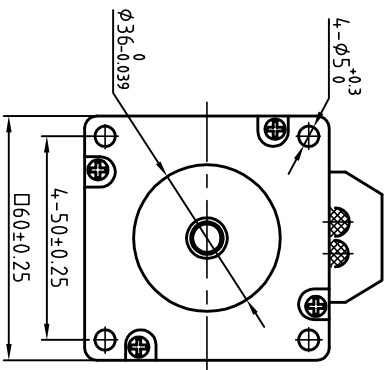
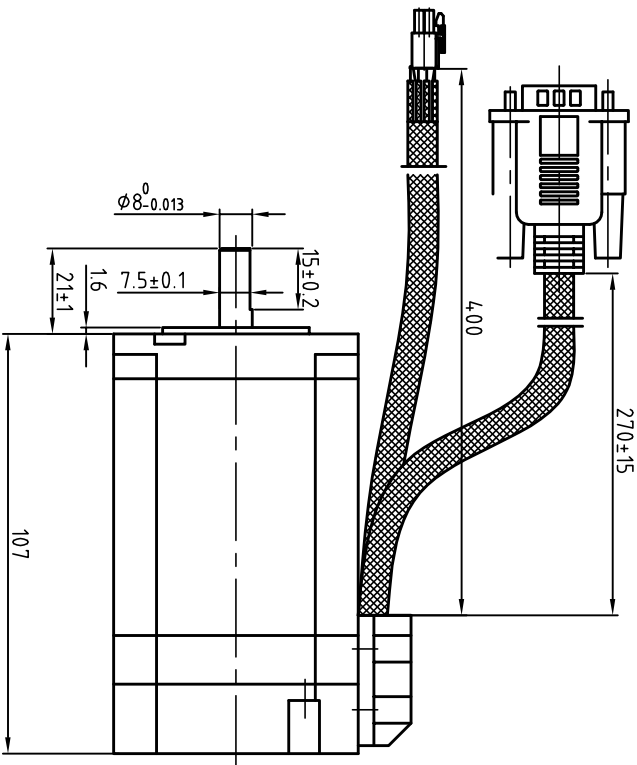
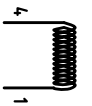
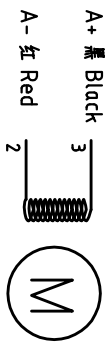
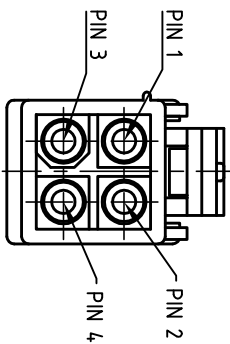


Dimension: (Unit: mm)



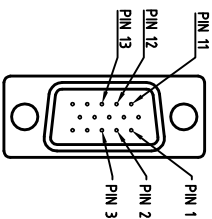
版本 Rev:	日期 Date	变更文件号 ECU NO.	变更内容 Revisions	设计 By
V1.0	17.10.19		60机芯, 增加安普头	王洪松

Motor Connections



B+ 黄 Yellow B- 绿 Green

Encoder Signals



PIN	1	2	3	11	12	13
颜色	黑	红	白	黄	绿	蓝
定义	A+	VCC	GND	B+	B-	A-

Common Rating

Step angle	1.8°
Position accuracy	1.8±0.09°
Dielectric strength	500VAC 1min
Insulation resistance	100MΩhm(500VDC)
Insulation class	B
Tamp risel(Max)	80K
Radial play	Max:0.02mm(load 450g)
Axial play	Max:0.08mm(load 900g)

Specification

Current/phase	5.0 A
Voltage	2.3 V
DC Resistance/phase ±10%	0.45 Ω
Inductance/phase ±20%	2.0 mH
Holding torque	3.0 N·M
Inertia	0.69 kg·cm ²
Weight	1.3 kg
Encoder resolution	1000 cpr

设计 Designed	王洪松	日期 Date	17.10.19	材料 Material	
审核 Checked	秦军	17.10.19		第一角画法 First Angle projection	
批准 Approved	田天胜	17.10.19		重量 Weight	
图号 Part No.				比例 Scale	
				请标注 Storage Mark	
				共 1 套 第 1 套 Sheet 1 of 1	
				图号 DWG. NO.	LS-CM60-02-0010-02
深圳市雷赛智能控制股份有限公司 SHENZHEN LEADSHINE TECHNOLOGY CO., LTD.			混合伺服电机 60CME30X-C		